

History:
High Voltage Laboratory

The year 1891 the young ingeneer Hans Peter Prior founded what was to become one of Denmarks largest industrial adventures. The Company Nordisk Kabelfabrik, later NKT, sarterd out in Store Kannikestraede14 in central Copenhagen.

After the WWII the production moved outside Copenhagen to the city of Broendbyoester, by help from the American Marshall Program assisting European industry to recover Nordisk Kabelfabrik were able to build a production facility never seen before.

The plan for the laboratory came together through several trips to other similar facilities in Europe, the plan was to build a benchmark laboratory which should present the most modern facility ever seen.

The ambition was to plan a laboratory which at the inside were State of Art and on the outside were capable of operating far in to the future where technology, knowledge and research were the new world order.

The Funen Architect Kaj Stensballe were chosen to carry out the task. He enter the assignment by studying the most visionary arcitectorial trends at present time.

The interior design of the laboratory were full of impressing constructions that could test the line of products, thousands of volts were send through the cables, simulating lightning strikes, the laboratory had to withstand sparkles, smoke and high presentations of free electrons. Experimental machinery that would have made Edison and Tesla proud.

The house has not been rebuild since the construction and did serve the same functions until NKT left the building in 2002.

Except from painting, signes and regular maintenance the complete building appears still as the original ideas.

The laboratory has been acquired by Lightcom A/S who have discovered the potential of the building and technical engineers are replaced by artists, audience and stage technicians.

The laboratory are still able to deliver superior acoustic dampening and circulating heat even on cold winter day.

Step into capsule of history, feel the and see the installments build back in 1960’s delivered by historical museum of NKT holding.

Data of the Building

Adress:
230 Priorparken, DK-2605 Brøndby, Denmark

Year of Construction:
1958 -1960

Originally Purpose:
High Power Laboratorie

Builder:
Nordiske Kabel- og Traadfabriker

Arcitect:
Kaj Stensballe

Trim height in the Prepzone:
Metric: 16 meters
Imperial: 52 feet 5 inch

Wide:
Metric 27,9 meters free area 30 meters total
Imperial: 91 feet 6 inch free area 98 feet 5 inch total

Length:
Metric: 45 meters
Imperial: 147 feet 7 inch

Area:

Metric:
Free workspace: 1255,5 sqm complete area 1350 sqm

Imperial:
Free workspace: 13377 sqf complete area 14406 sqf
Imperial:

Power Supply:
3 * 1500 amps

CLIENT
[LITE]COM A/S

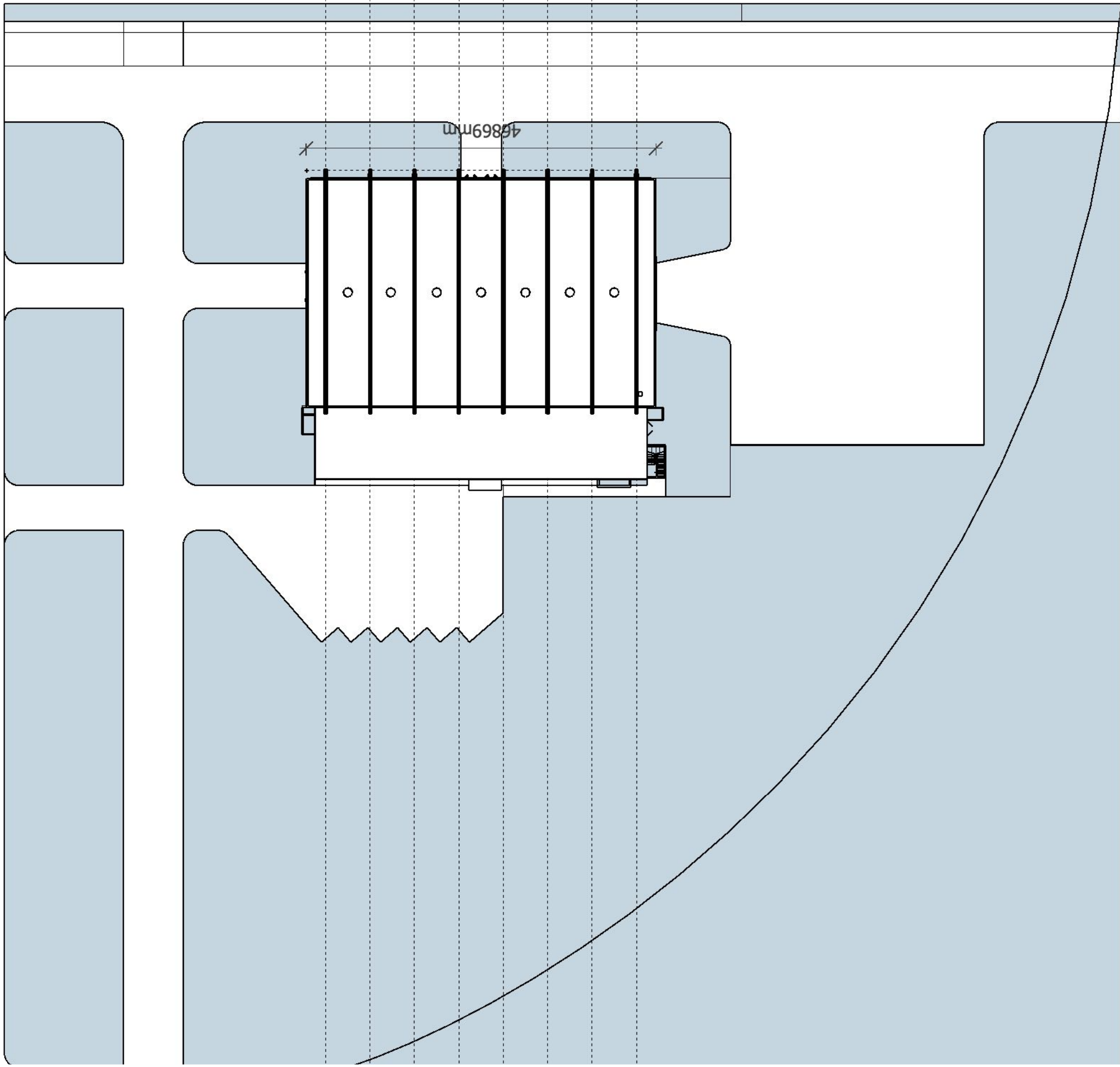
ISSUE
26.03.2018
RE-ISSUE

PROJECT NO.
PROJECT
THE CUBE

DRAWN BY
RBS

a

01



DRAWN BY
RBS

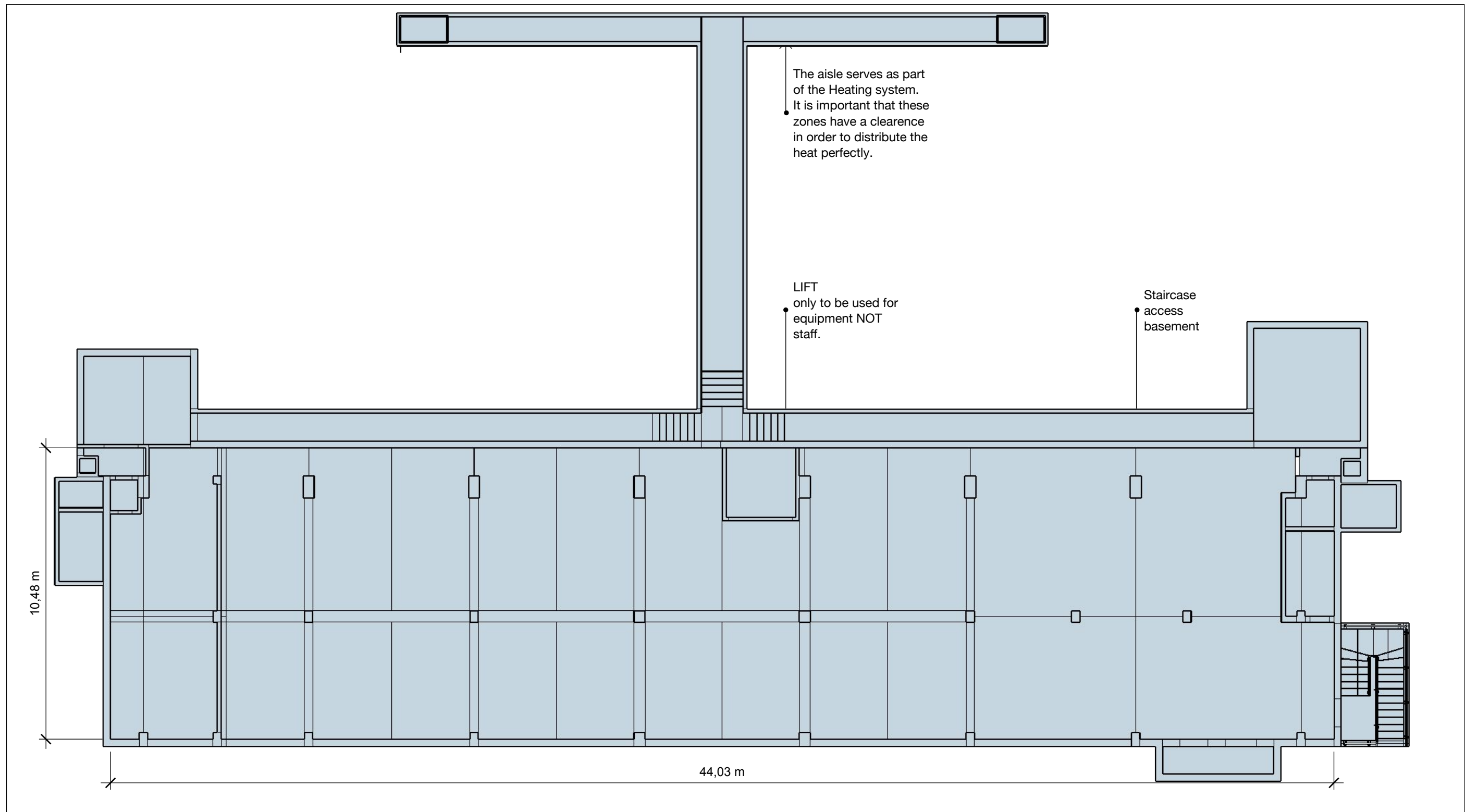


02

PROJECT NO.
PROJECT
THE CUBE

ISSUE
26.03.2018
RE-ISSUE

CLIENT
[LITE]COM A/S



It is possible to storage equipment in the basement during rehearsals, transporting the equipment can either be done via elevator (only purpose for equipment not personal) or by the stairs.

The basement serve as part of heating and cooling of the Prepzone. In each end of the building heat are pumped in through isles in the walls into the prepzone along the floor outlets distributing the heated air evenly into the room. The circulation of the airflow are sucked into the two floor izones placed at the center line of the floor area, and being reused into the system.

Basement Area:
 Metric 44 meters long 10,4 meters wide and 3,4meters high
 Imperial: 144 feet long 34 feet wide and 11 feet high

BASEMENT

CLIENT
[LITE]COM A/S

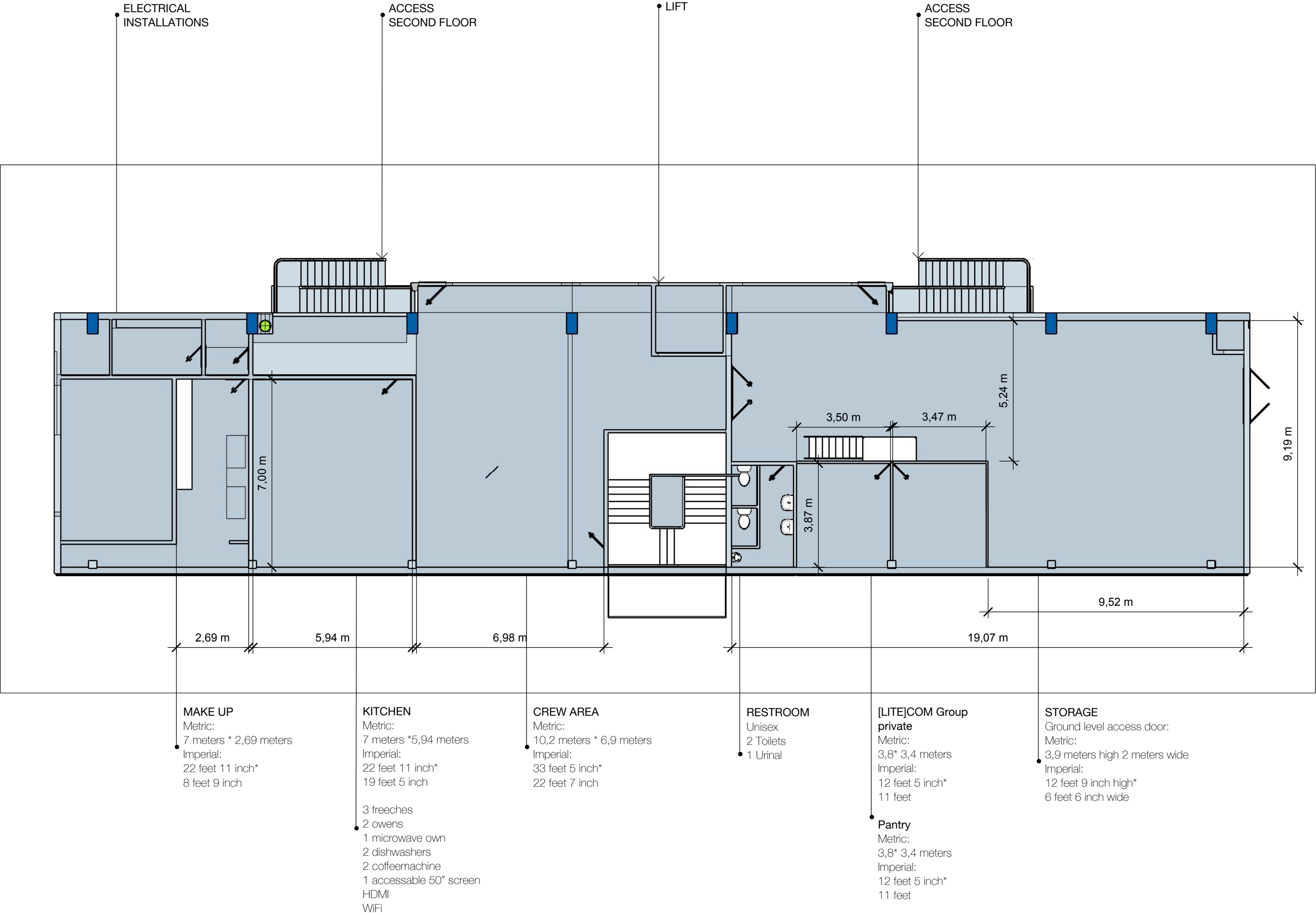
ISSUE
26.03.2018
RE-ISSUE

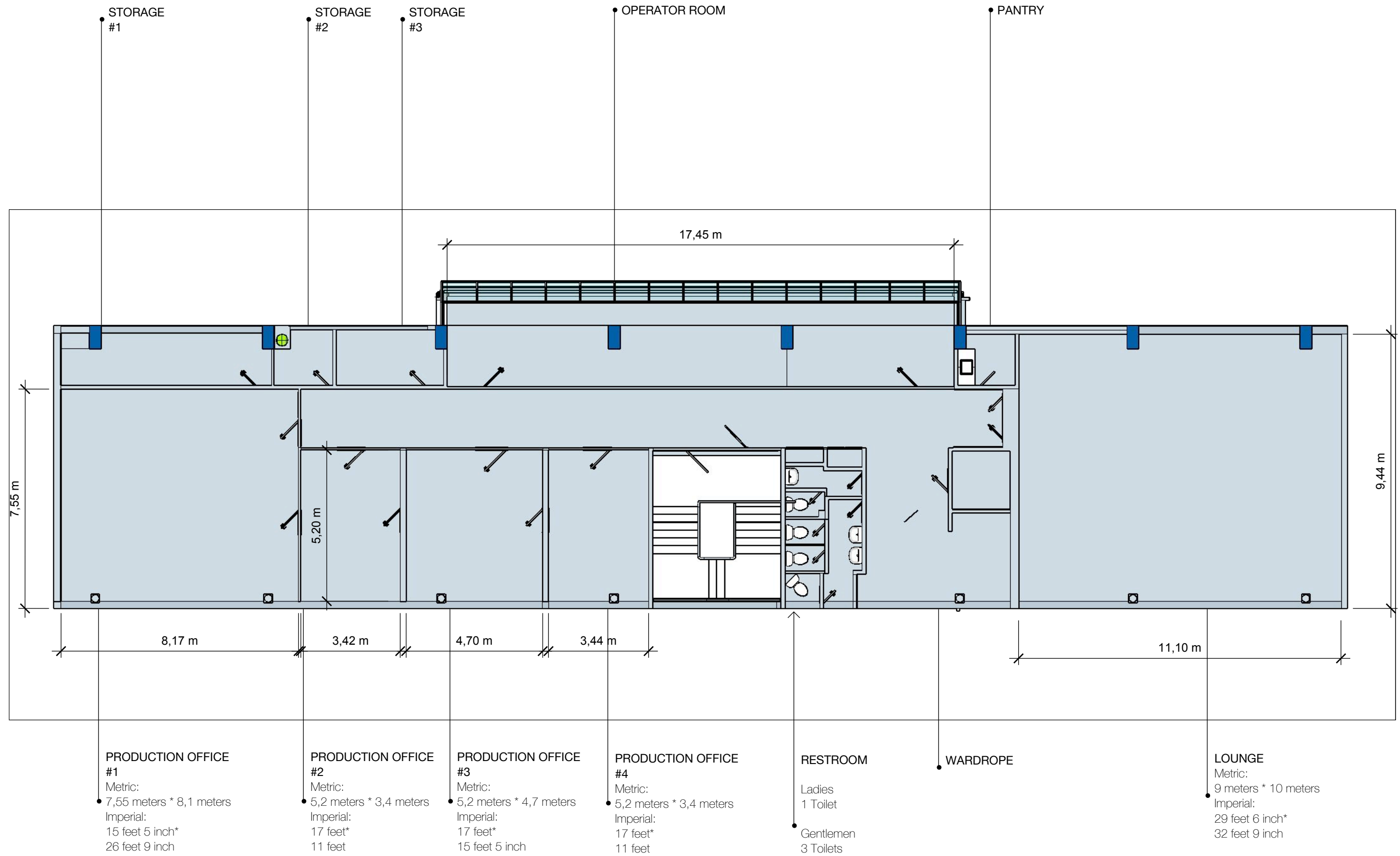
PROJECT NO.
PROJECT
THE CUBE

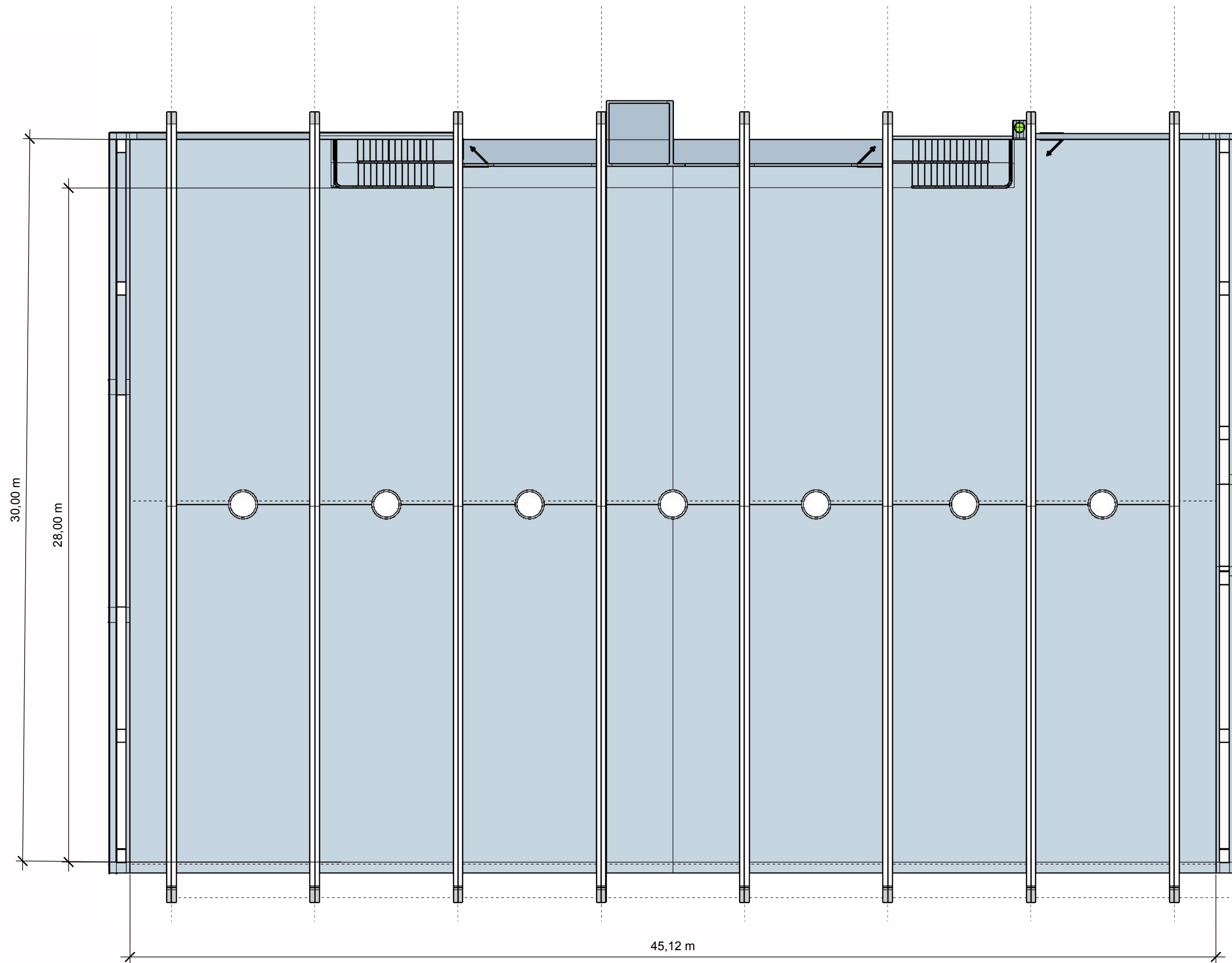
DRAWN BY
RBS

a

03







The Prep zone deliver a floor area 30 * 45 meters 16 meters clearance and 14 meters clearance to the mother grid. The main floor is 27,9 * 45 meters free area.
 The Prep zone deliver a floor area 98 feet 5 inch * 147 feet 7 inch 52 feet 5 inch clearance and 45 feet 11inch clearance to the mother grid. The main floor is 91 feet 7 inch * 147 feet 7 inch free area.

Power Supply: 3 * 1500 amps

DRAWN BY
RBS

PROJECT NO.
PROJECT
THE CUBE

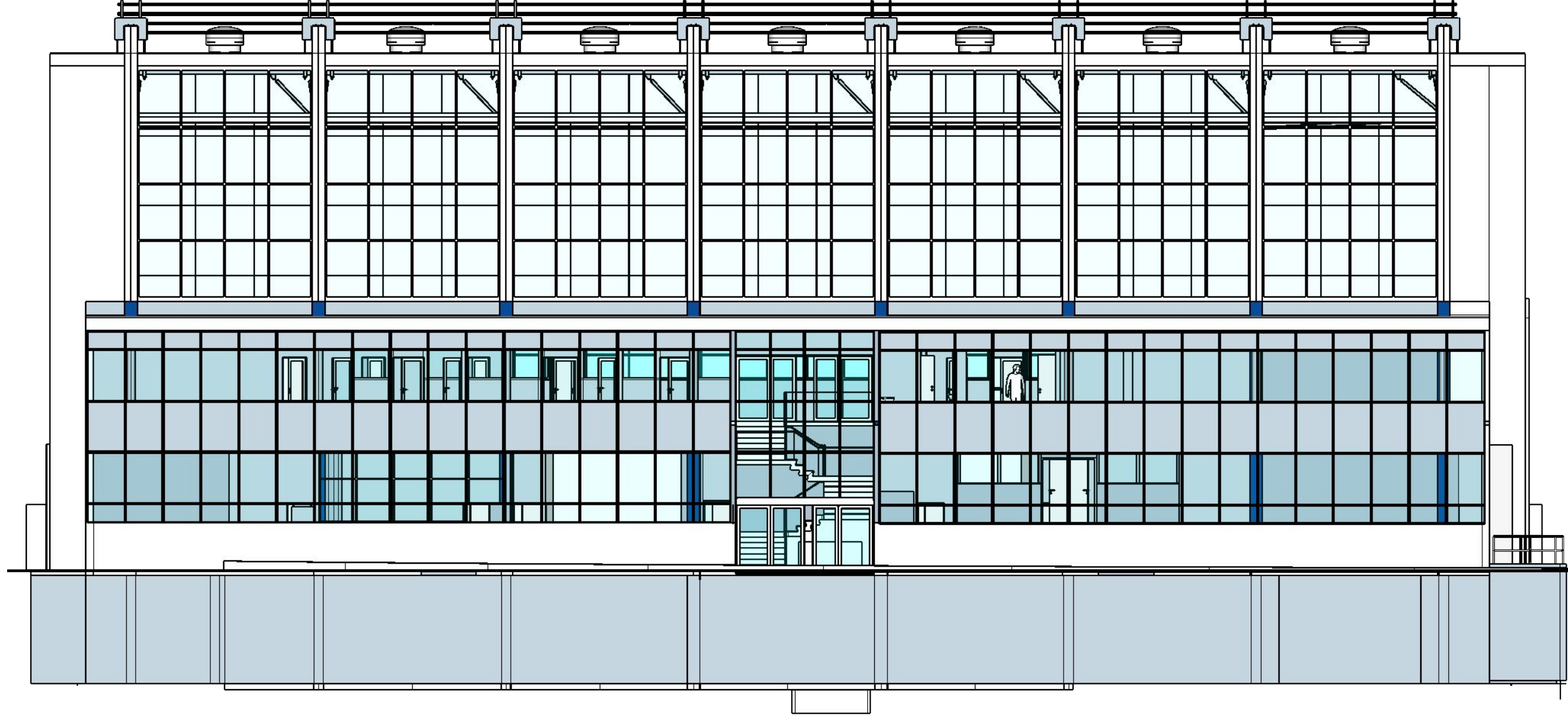
ISSUE
26.03.2018
RE-ISSUE

CLIENT
[LITE]COM A/S

PREP. ZONE

a

06



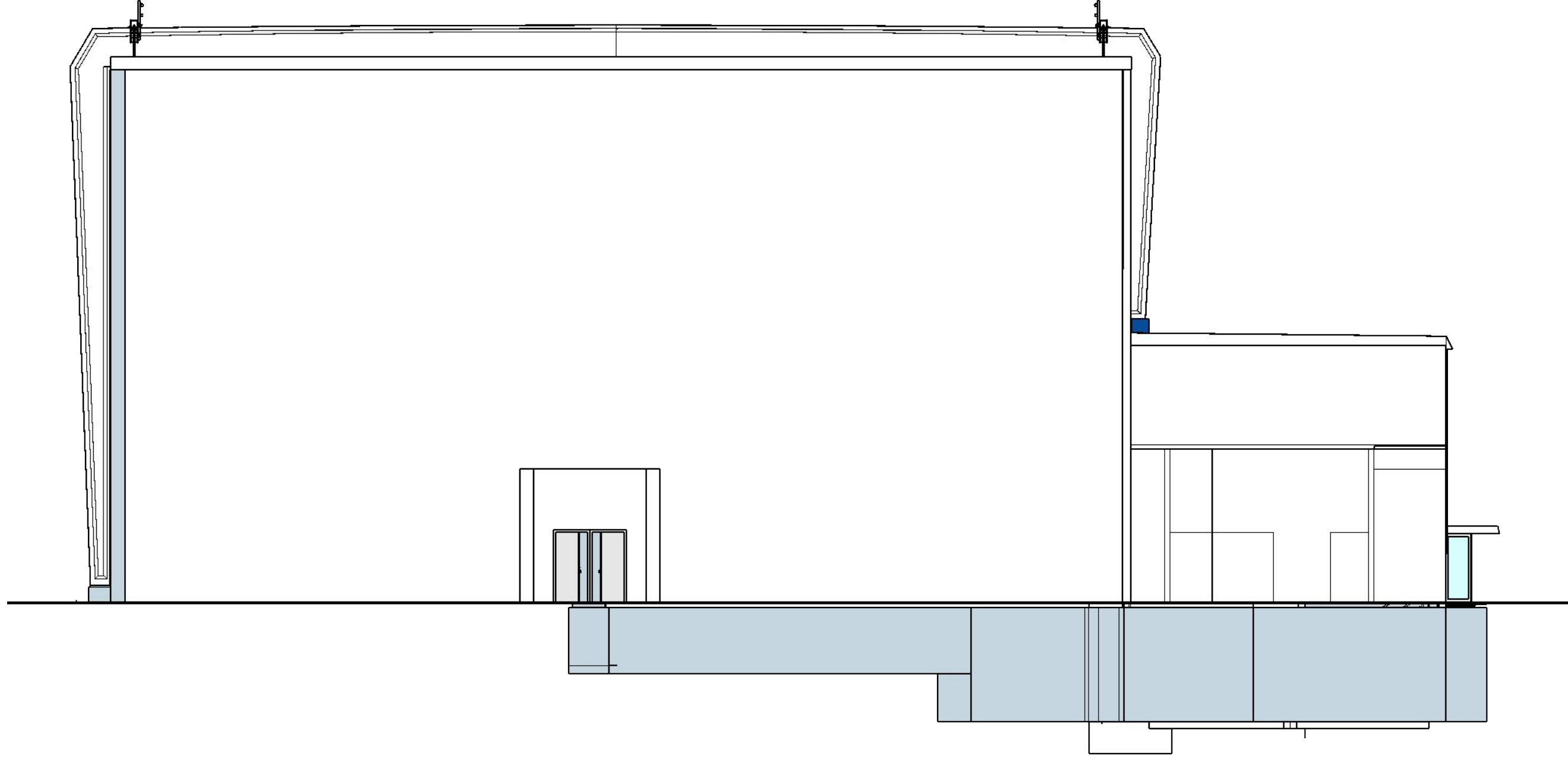
DRAWN BY
RBS

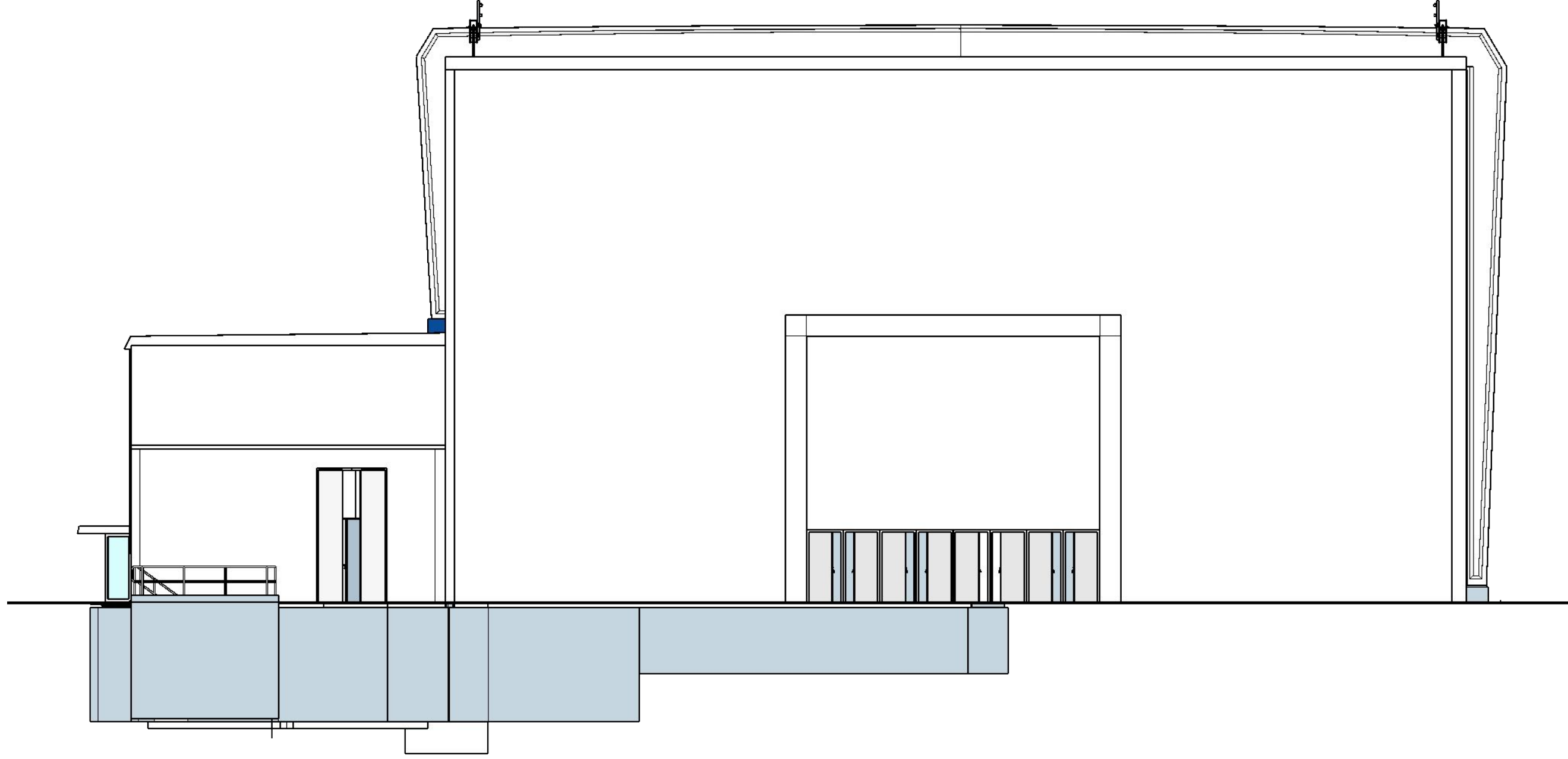
PROJECT NO.
PROJECT
THE CUBE

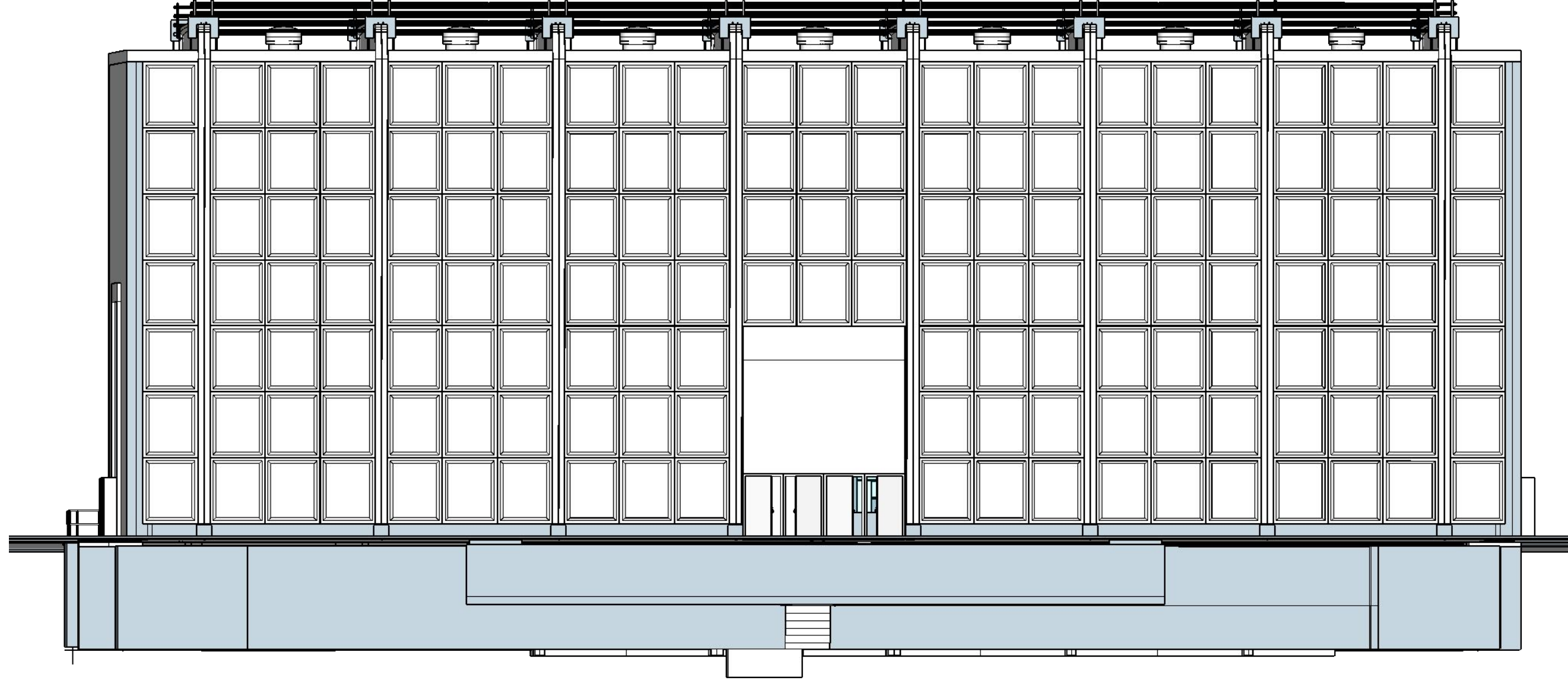
ISSUE
26.03.2018
RE-ISSUE

CLIENT
[LITE]COM A/S

FRONT VIEW
EAST







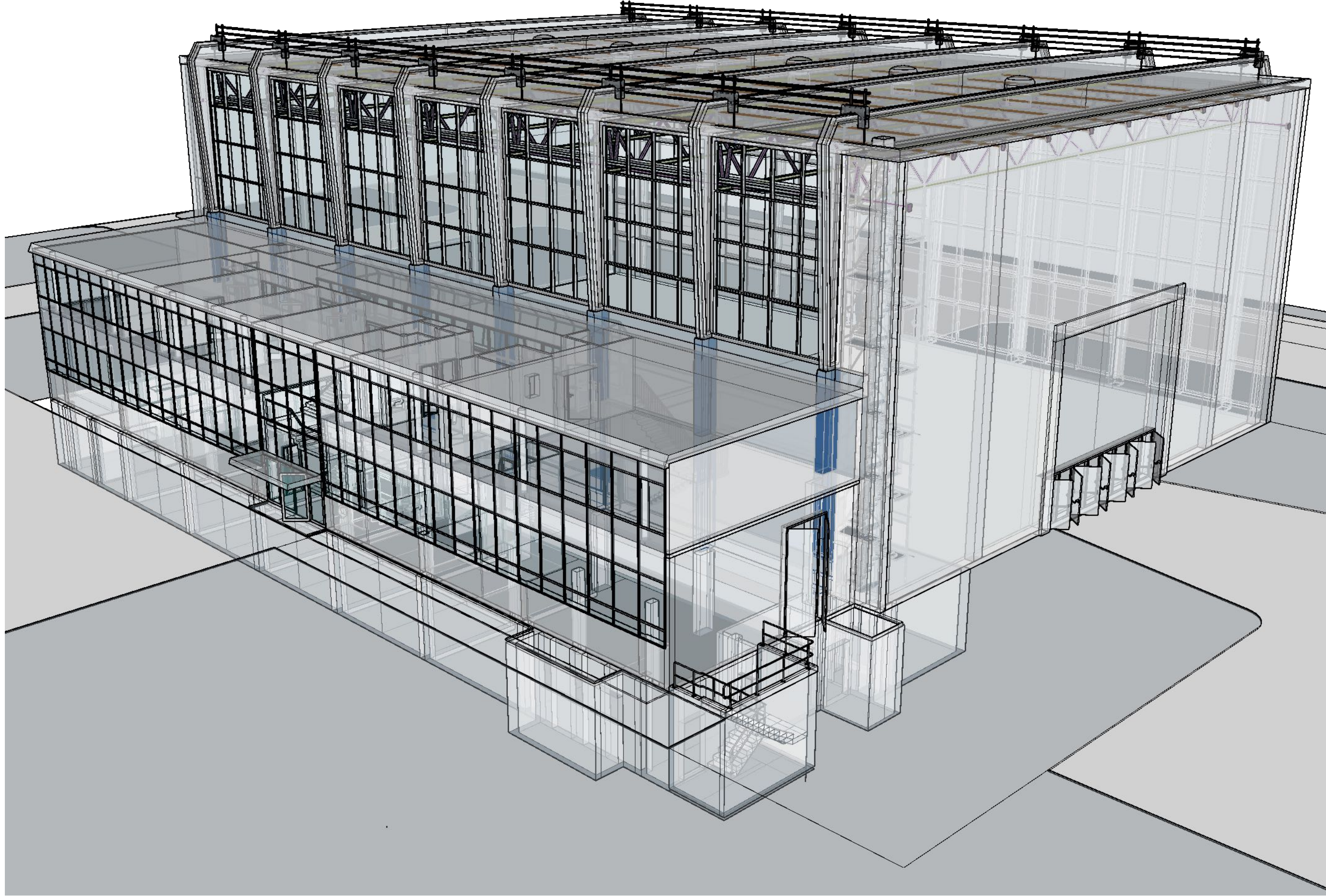
DRAWN BY
RBS

PROJECT NO.
PROJECT
THE CUBE

ISSUE
26.03.2018
RE-ISSUE

CLIENT
[LITE]COM A/S

BACK VIEW
WEST



DRAWN BY
RBS

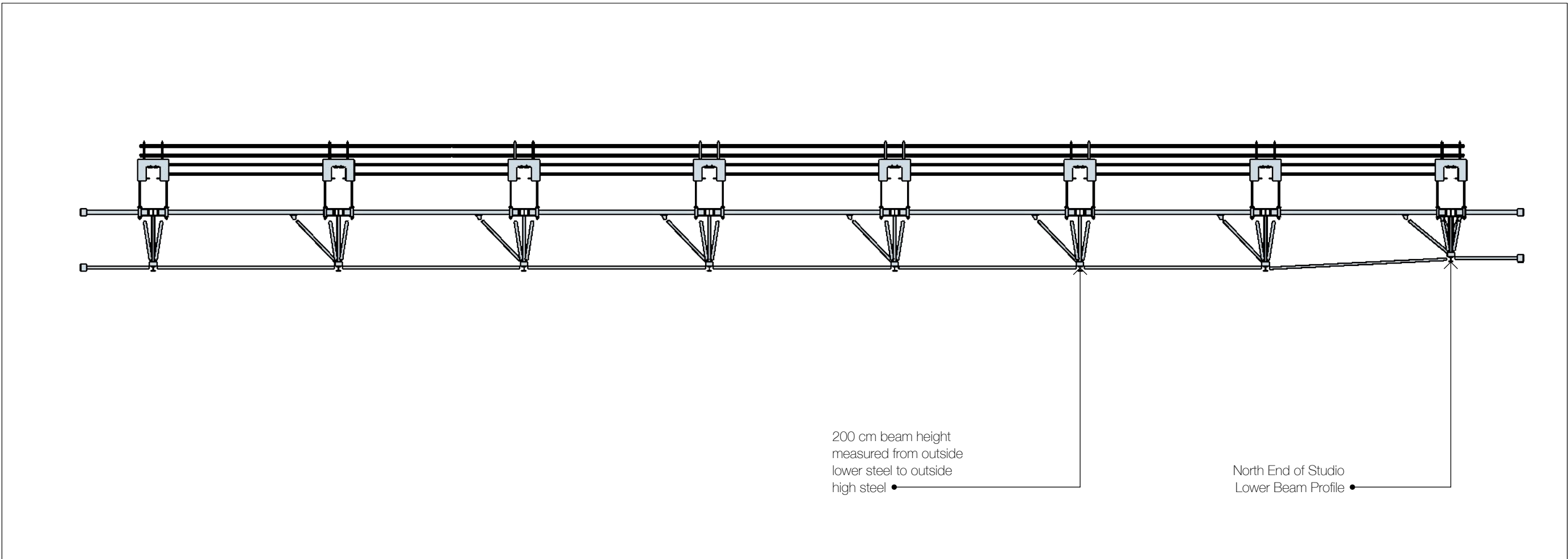
PROJECT NO.
PROJECT
THE CUBE

ISSUE
26.03.2018
RE-ISSUE

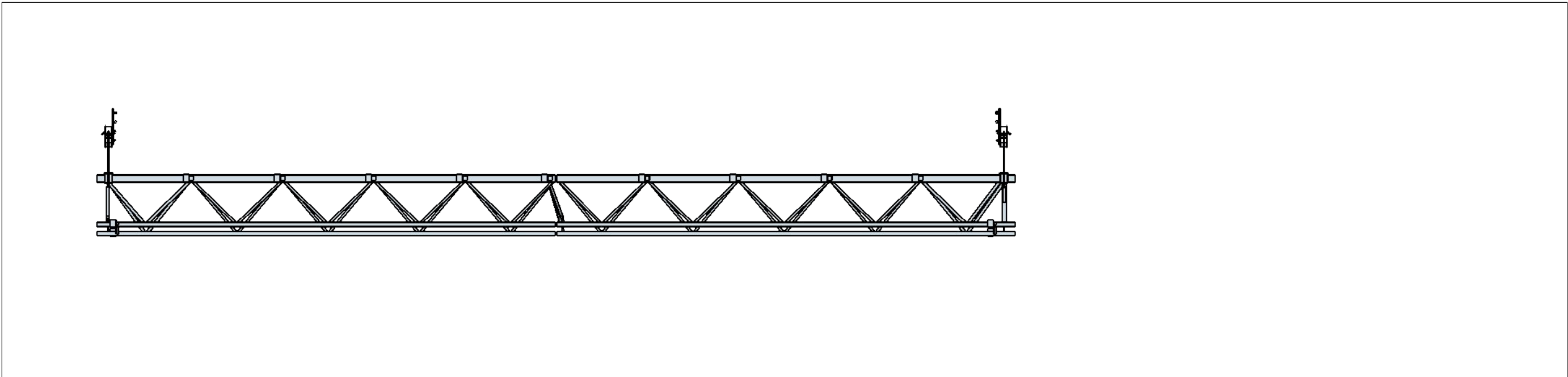
CLIENT
[LITE]COM A/S







Sideview



Frontview - facing north

DRAWN BY
RBS



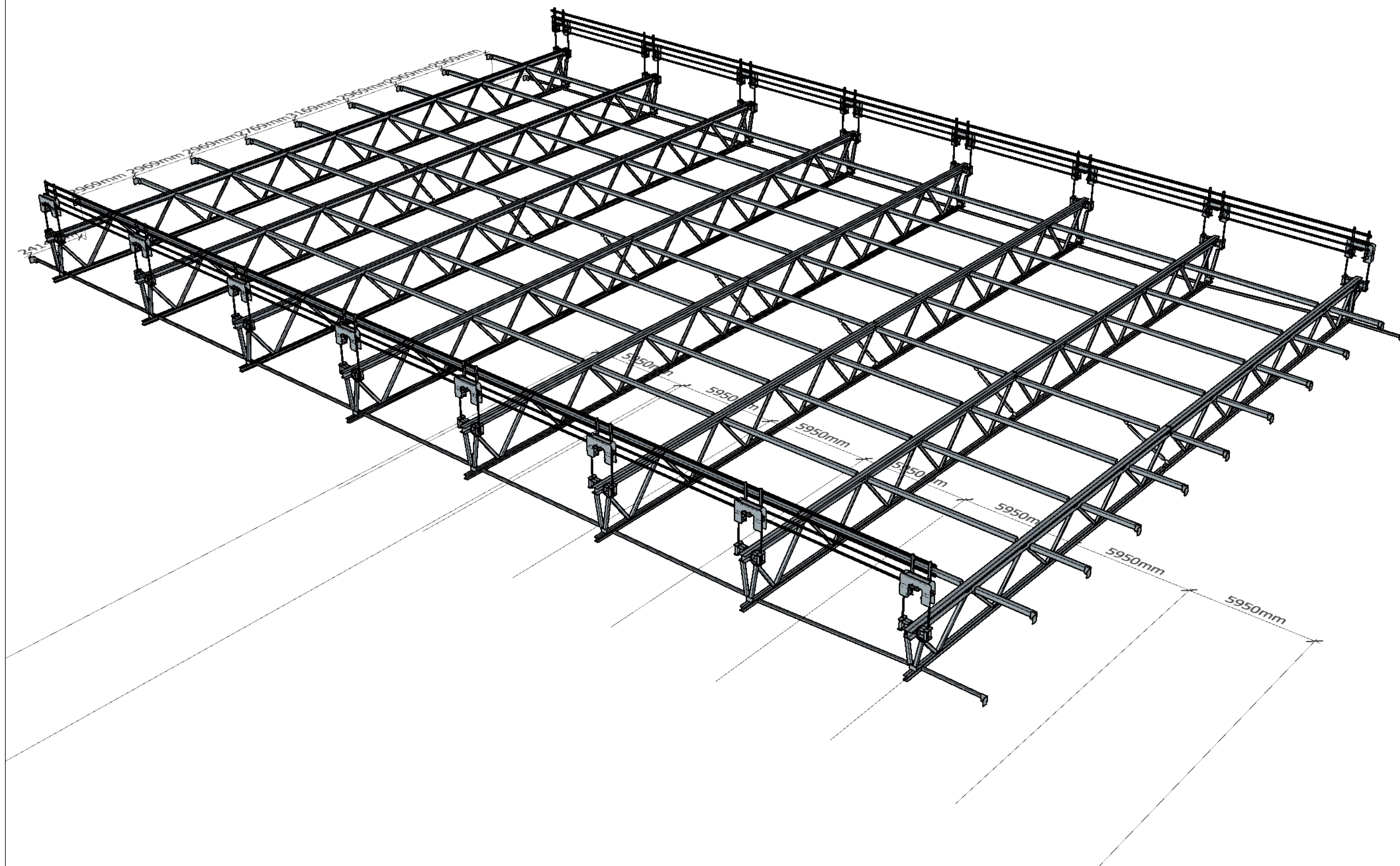
13

PROJECT NO.
PROJECT
THE CUBE

ISSUE
26.03.2018
RE-ISSUE

CLIENT
[LITE]COM A/S

SIDEVIEW & FRONTVIEW
MAIN GRID



DRAWN BY
RBS

PROJECT NO.
PROJECT
THE CUBE

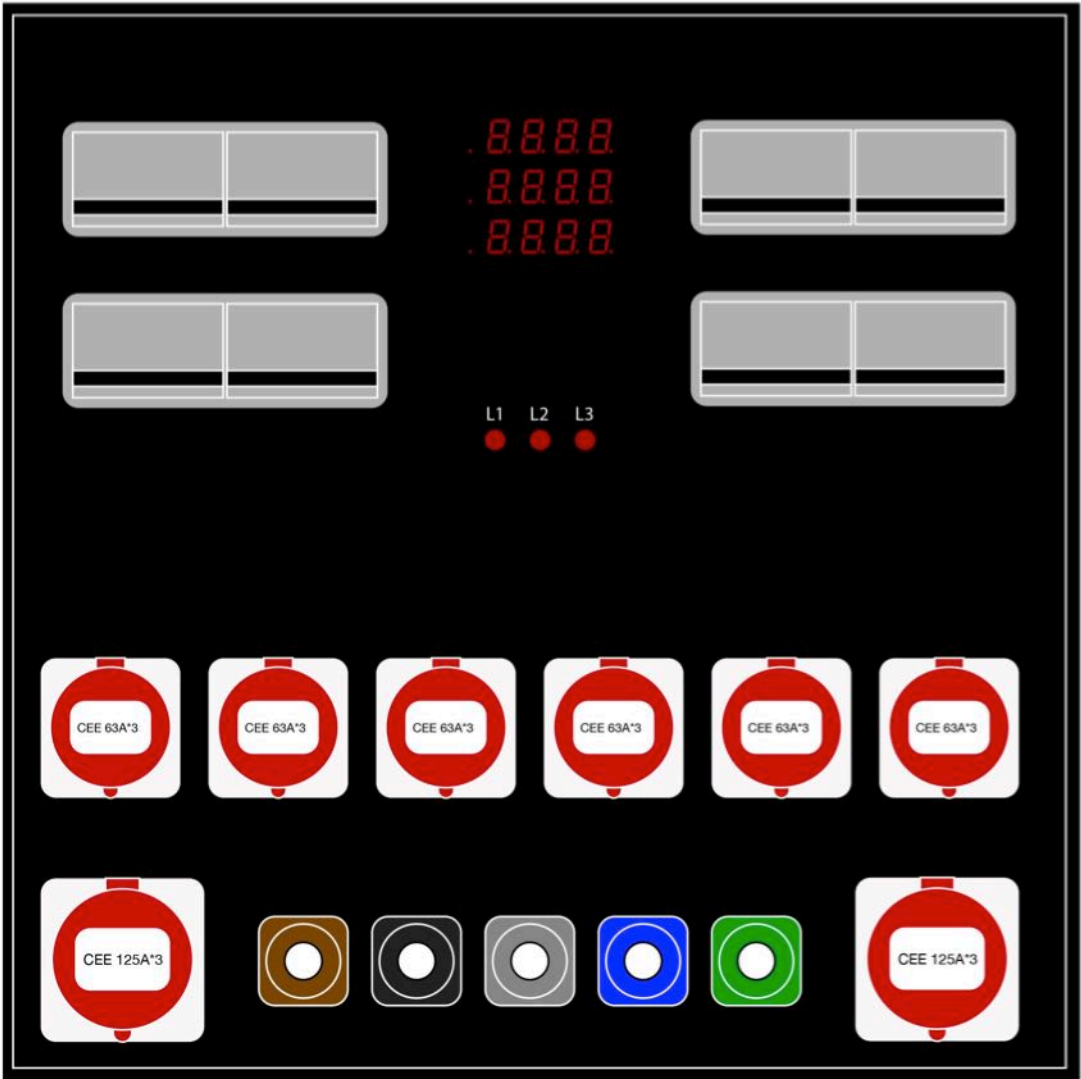
ISSUE
26.03.2018
RE-ISSUE

CLIENT
[LITE]COM A/S

ISOMETRICVIEW
MAIN GRID

a

14



PA Sound only/part of the evacuation system

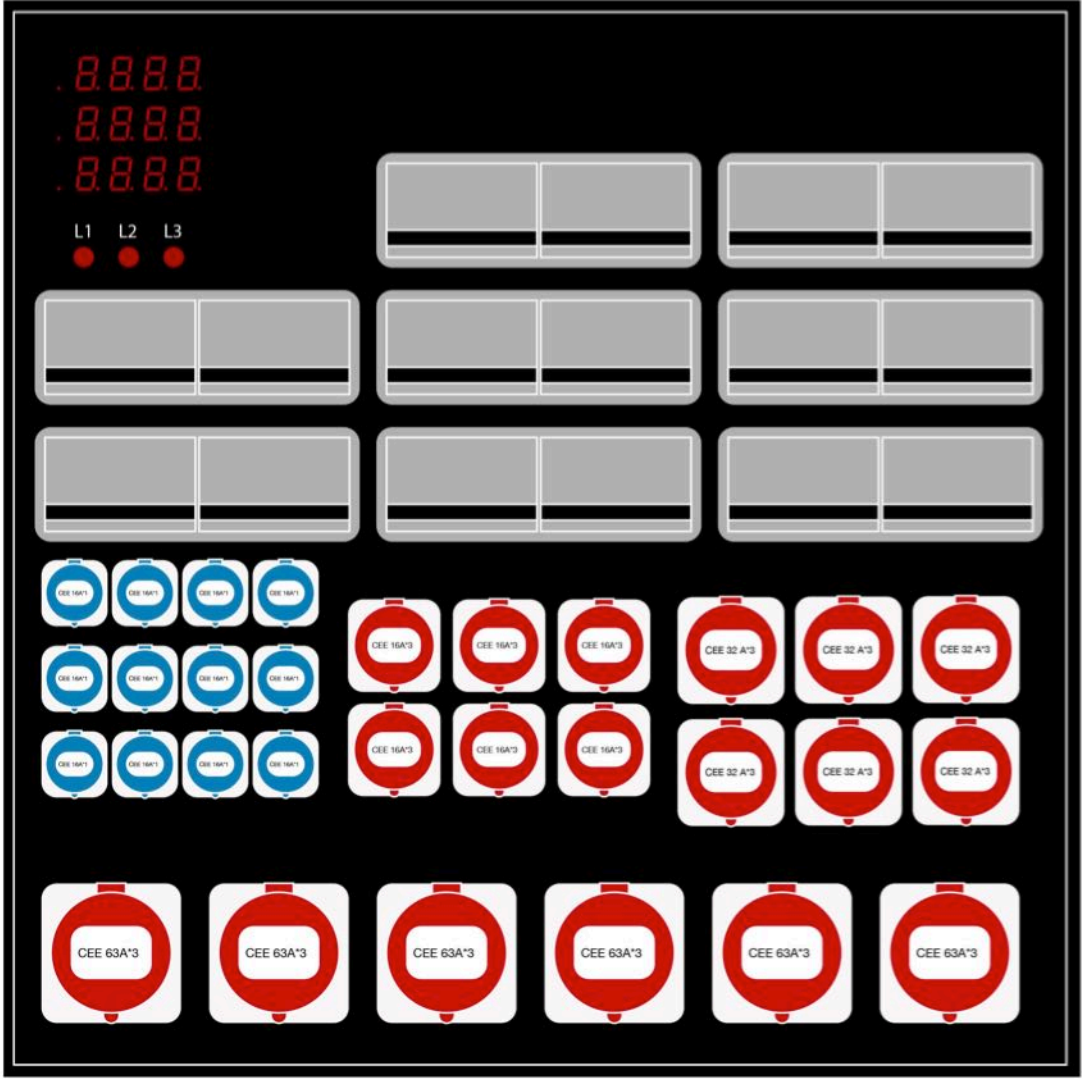
POWER DISTRIBUTION UNIT
PDU TYPE #1

POWER IN:
The PDU is feeded from the mains in the House Facility own Transformer station.
3*400A

POWER OUT

1 pcs	400A	Powerlock
2 pcs	CEE 125*3 A	RED PCE
6 pcs	CEE 63*3 A	RED PCE

All breakers for outlets are position in the PDU



PA Sound only/part of the evacuation system

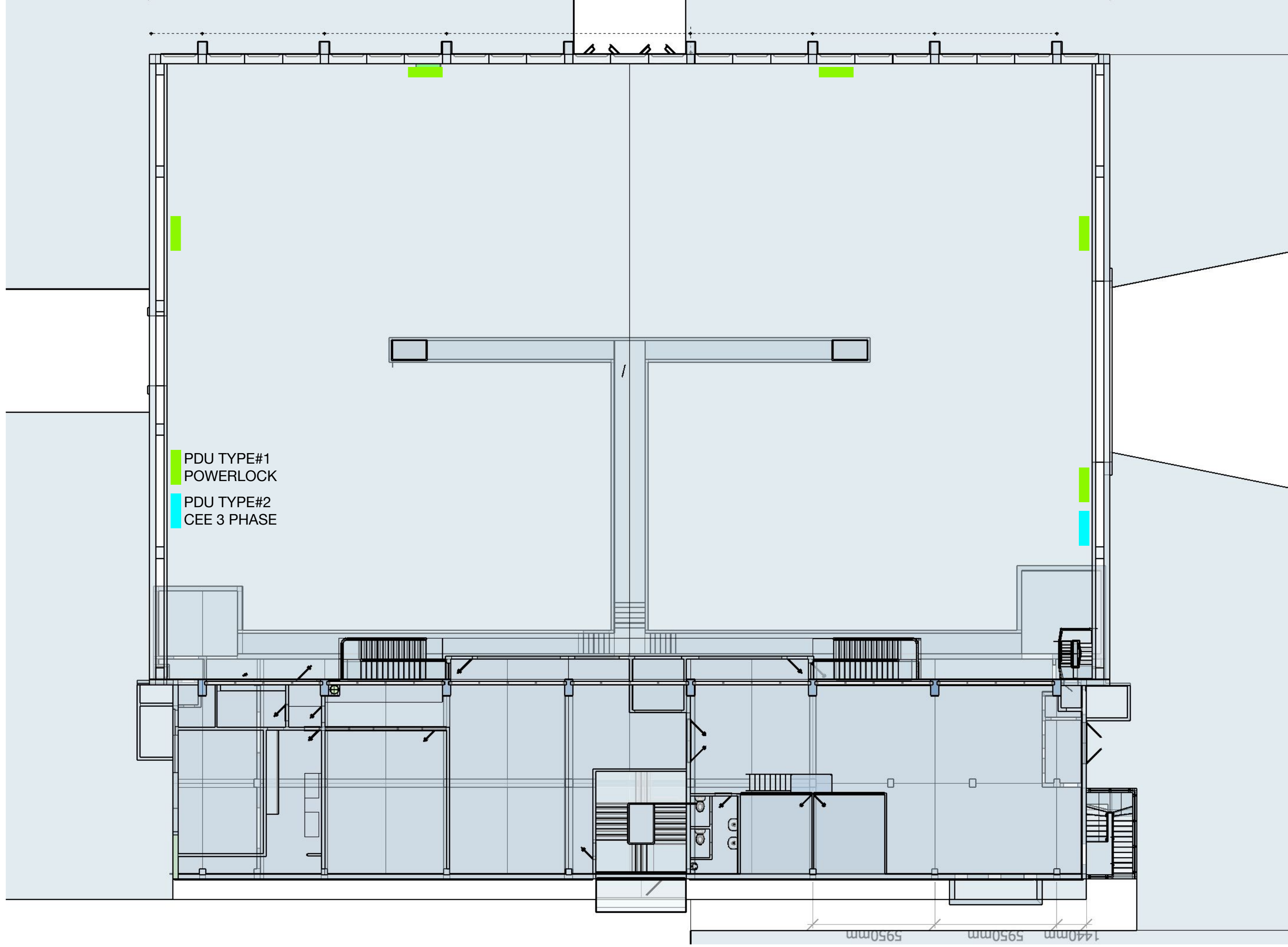
POWER DISTRIBUTION UNIT
PDU TYPE #2

POWER IN:
The PDU is feeded from the mains in the House Facility own Transformer station.
3*400A

POWER OUT

6 pcs	CEE 63*3 A	RED PCE
6 pcs	CEE 32*3 A	RED PCE
6 pcs	CEE 16*3 A	RED PCE
12 pcs	CEE 16*1 A	BLUE PCE

All breakers for outlets are position in the PDU



DRAWN BY
RBS

PROJECT NO.
PROJECT
THE CUBE

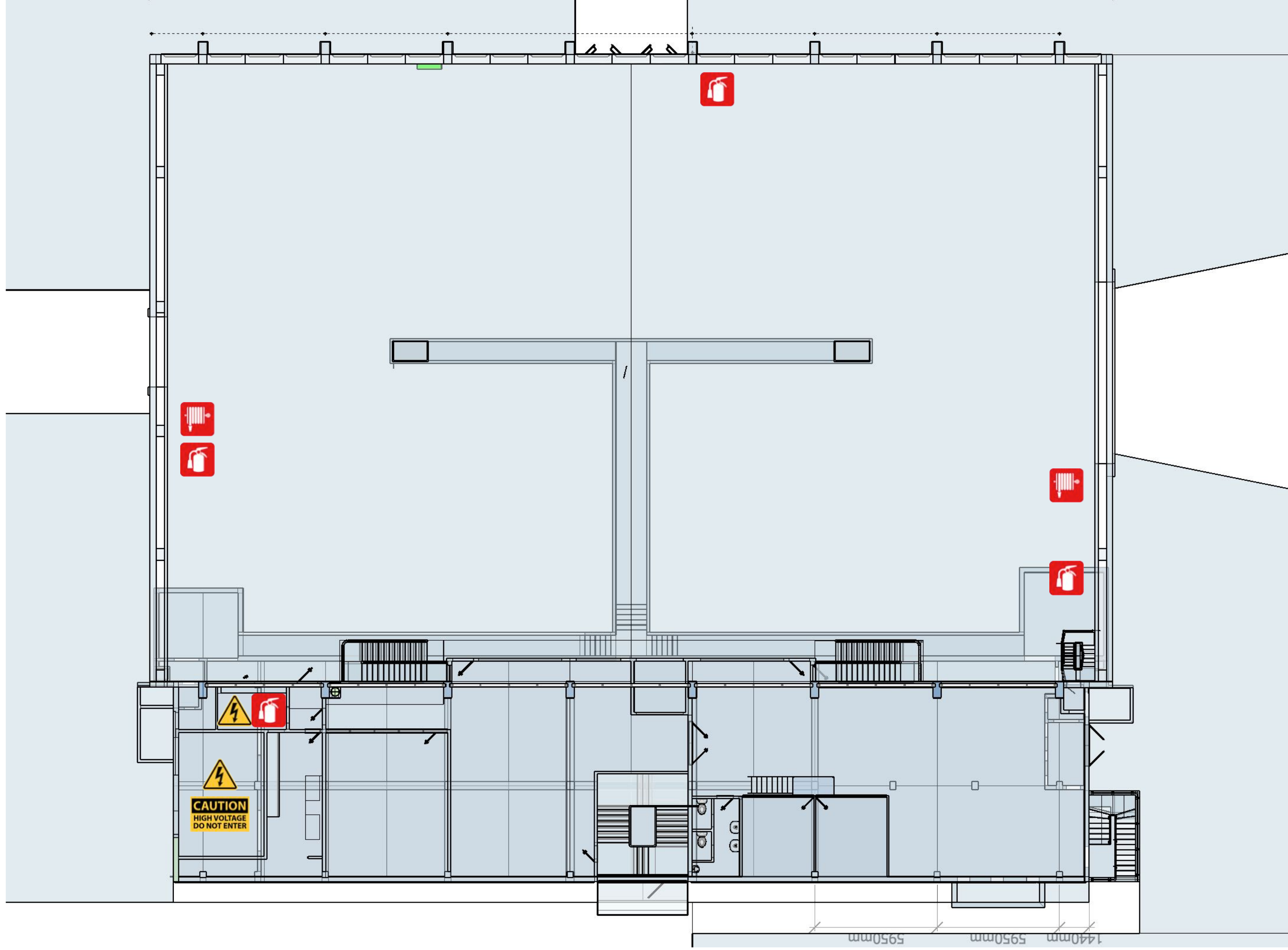
ISSUE
26.03.2018
RE-ISSUE

CLIENT
[LITE]COM A/S

a

16

POWER



DRAWN BY
RBS

a

17

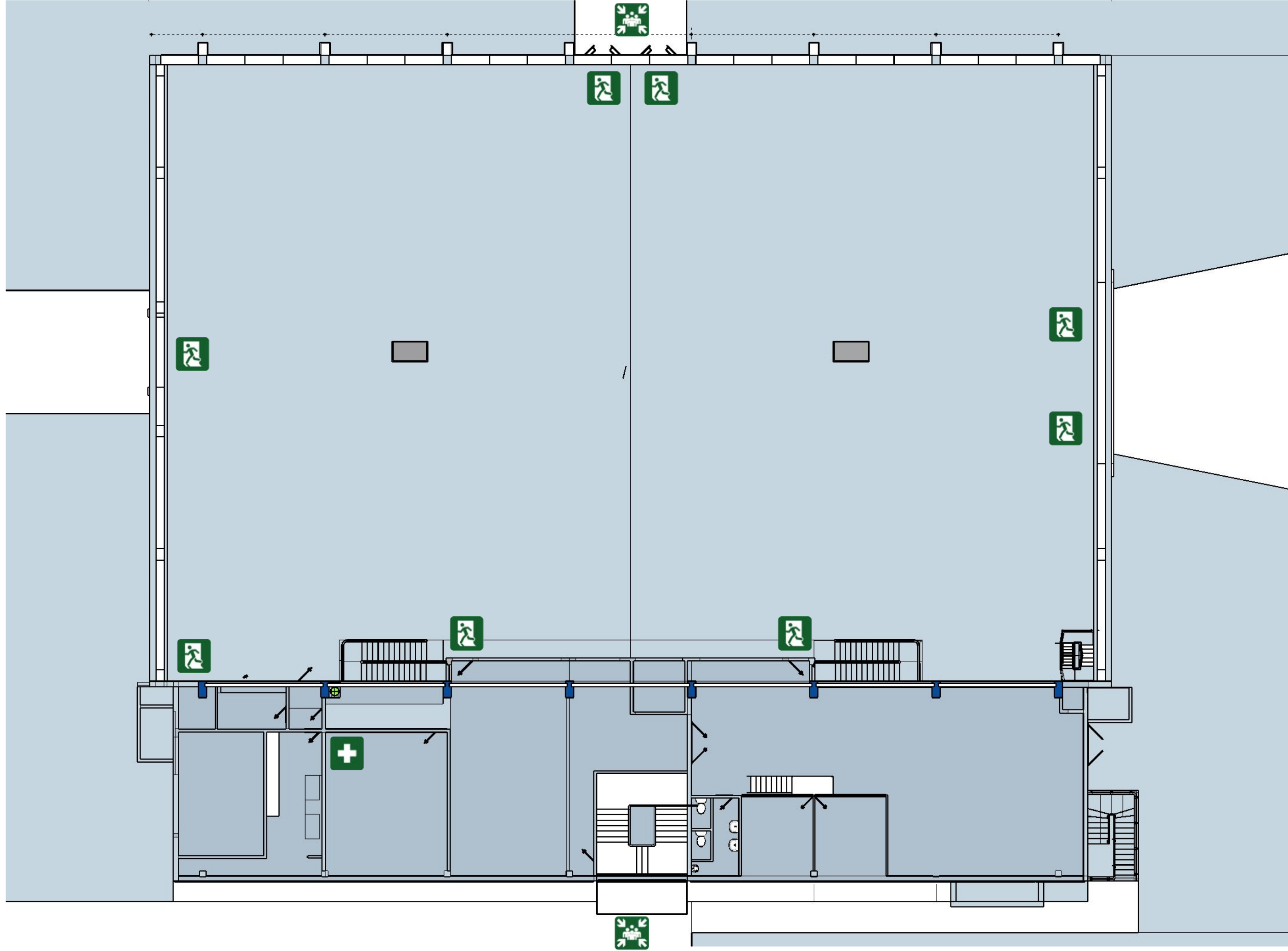
PROJECT NO.

PROJECT
THE CUBE

ISSUE
26.03.2018
RE-ISSUE

CLIENT
[LITE]COM A/S

FIRE EQUIPMENT



DRAWN BY
RBS

PROJECT NO.
PROJECT
THE CUBE

ISSUE
26.03.2018
RE-ISSUE

CLIENT
[LITE]COM A/S



A Hotels
Vibeholms Allé 19-23,
2605 Brøndby

P. +45 43 20 22 22
E. info@ahotels.dk
www.a-hotel.com/da/danmark/

Free Wi-fi
Free Parking

Distance to the Cube
By car 1 minute
by foot 8 minutes

to CPH Airport 22 km
to RKE Airport 34 km

to Central station 10 km
to Glostrup train station 2 km

Scandic Glostrup Hotel
Roskildevej 550
2605 Brøndby

P. +45 43 43 42 00
F. +45 43 43 33 80
E. glostrup@scandichotels.com
www.scandichotels.com

Free Wi-Fi
Free parking

Distance to the Cube
By car 1 minute
by foot 8 minutes

to CPH Airport 22 km
to RKE Airport 34 km

to Central station 10 km
to Glostrup train station 2 km

Glostrup Park Hotel
Hovedvejen 41
2600 Glostrup

P. +45 43 96 00 38
E. glostrup@parkhotel.dk
www.parkhotel.dk

Free Wi-Fi
Free parking

Distance to the Cube
By car 1 minute
by foot 8 minutes

to CPH Airport 22 km
to RKE Airport 34 km

to Central station 10 km
to Glostrup train station 2 km

CLIENT
[LITE]COM A/S

ISSUE
26.03.2018
RE-ISSUE

PROJECT NO.
PROJECT
THE CUBE

DRAWN BY
RBS



Hotel Dangleterre
Kongens Nytorv 34
1050 Copenhagen K

P. +45 33 12 00 95
E.
www.adangleterre.com

Free Wi-fi
Free Film
Parking Service

Distance to the Cube
By car 23 minutes

to CPH Airport 12 km
to RKE Airport 45 km

Sankt Petri
Krystalgade 22
1172 Copenhagen K

P. +45 33 45 91 00
E. stay@sktpetri.com
www.sktpetri.com.com

Free Wi-Fi
Parking Service
Fithness

Distance to the Cube
By car 25 minutes

to CPH Airport 15 km
to RKE Airport 45 km

Copenhagen Admiral Hotel
Toldbodgade 24-28
1253 Copenhagen K

P. +45 33 74 14 14
E. booking@admiralhotel.dk
www.admiralhotel.dk

Free Wi-fi

Distance to the Cube
By car 30 minutes

to CPH Airport 15 km
to RKE Airport 45 km

Marriott
Kalvebod Brygge 5
1560 Copenhagen K

P. +45 88 33 99 00
E. cphdk.reservations@cphmarriott.dk
www.copenhagenmarriott.dk

Free Wi-Fi

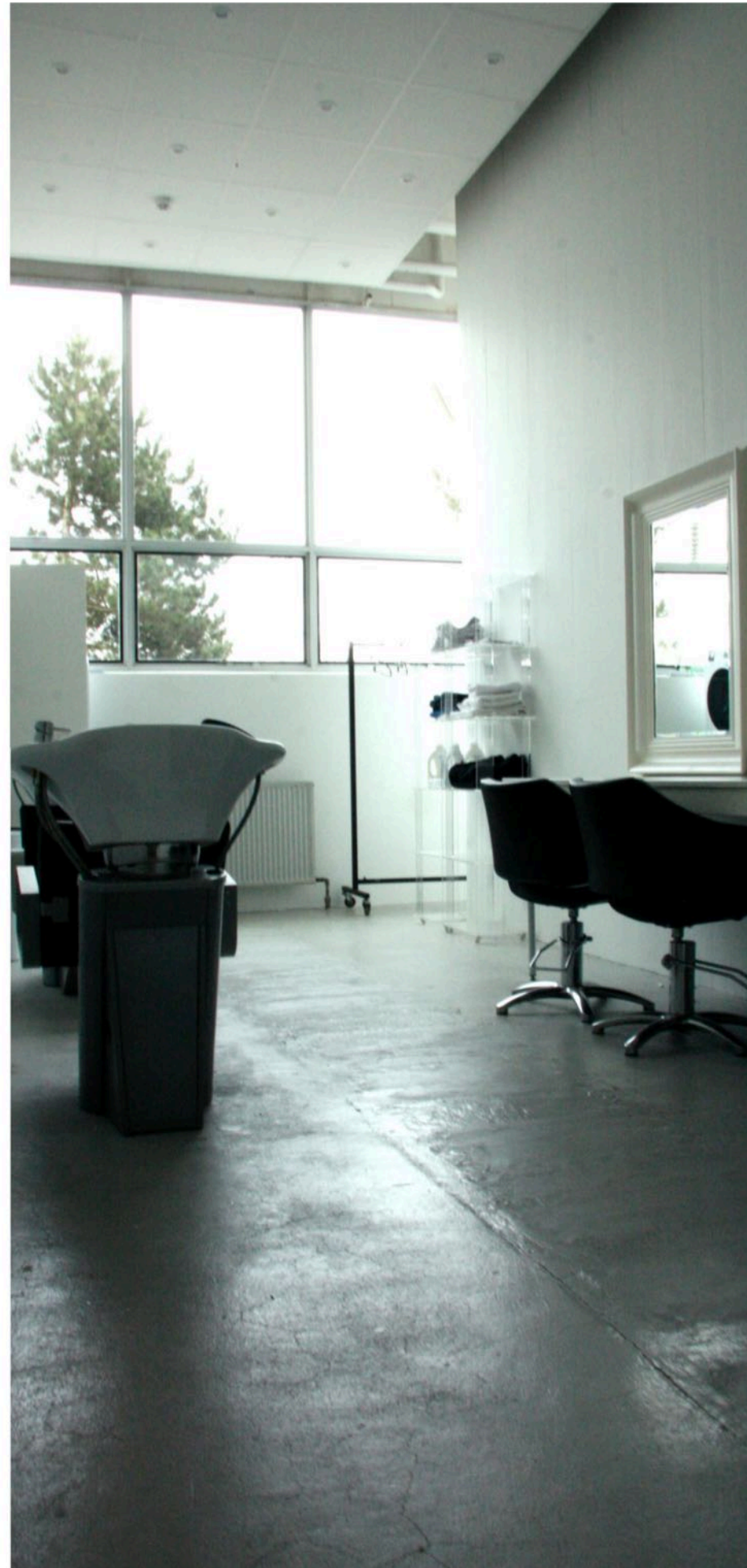
Distance to the Cube
By car 25 minutes
by foot 8 minutes

to CPH Airport 15 km
to RKE Airport 45 km

Kørevejledning fra syd og nord i bil

CPH lufthavn
RKE lufthavn
Centralstation





MAKE UP

Spacious Make Up and Stylist Facility

4 chairs with mirror and proper lighting

2 professional chairs

1 Washer

1 Dryer

1 linked Monitor for routing signals.

The windows faces East and for most of the day leaves the room with a soft northern light shadowless making it easier to control lighting artificial.

Metric:
7 meters * 2,69 meters
Imperial:
22 feet 11 inch*
8 feet 9 inch

CLIENT
[LITE]COM A/S

ISSUE
26.03.2018
RE-ISSUE

PROJECT NO.
PROJECT
THE CUBE

DRAWN BY
RBS

a

22





THE CUBE

PRIORHOUSE
[LITE]COM A/S
230, Priorparken
DK-2605 Brøndby
Denmark

Head Office:
[LITE]COM A/S
12, Kirstinehøj
DK-2770 Kastrup
Denmark

P. +45 32 96 16 81

PRODUCTION:

Artist
Dizzy Miss Lizzy
Lindsey Stirling
L.O.C.
Lucas Graham
Metallica
Mø
Nik & Jay
Rasmus Seebach
Richie Blackmore - Rainbow
Scarlet Pleasure
Suspect
The Nationals
Thomas Helmig
Volbeat

Productions Prep:
Eurovision Song Contest - Stockholm
Eurovision Song Contest - Kyiv
World Boxing Super Series - World tournament
Melodifestival Sweden

Productions
Vidunder børn
X-factor Promo
FCK Champions League Promo
DBU - Danish Football Federation - FIFA World Cup -
Preperation